

Nikon Digital Camera COOLPIX 5000 Specifications

**Type of camera** Digital camera E5000  
**Effective pixels** 5.0 million  
**CCD** 2/3-inch-type CCD (total pixels: 5.24 million)  
**Image size** 2,560 x 1,920 pixels, UXGA-size (1,600 x 1,200), SXGA-size (1,280 x 960), XGA-size (1,024 x 768), VGA-size (640 x 480), 3:2 (2,560 x 1,704) selectable  
**Lens** 3x Zoom-Nikkor; f=7.1-21.4mm [35mm (135) format equivalent to 28-85mm] /F2.8-4.8 with macro; 9 elements in 7 groups; all elements are made of environmentally friendly glass; Nikon Super Integrated Coating (SIC) applied; three glass molded aspherical lens elements included  
**Digital zoom** Up to 4x  
**Autofocus** Contrast-detect TTL AF; 7,514-step autofocus control including macro range; 5-Area Multi AF or Spot AF selectable  
**Focus modes** 1) Continuous AF mode (when using LCD monitor), 2) Single AF mode (when not using LCD monitor and/or selectable from shooting menu), 3) Manual (50 steps from 2cm [0.8 in.] to infinity (∞) with Focus Confirmation Indication)  
**Focus range** 50cm (19.7 in.) to infinity (∞); 2cm (0.8 in.) to infinity (∞) in Macro mode  
**Optical viewfinder** Real-image zoom viewfinder; diopter adjustment: - 2 ~ +1m<sup>-1</sup>  
**LCD monitor** 1.8-in., 110,000-dot, low-temp. polysilicon TFT LCD (white LED backlight); brightness/hue adjustment; frame coverage: approx. 97%  
**Storage** System: EXIF 2.1 file (uncompressed TIFF or compressed JPEG) Design rule for Camera File system (DCF), Digital Print Order Format (DPOF), QuickTime Motion JPEG (Movie) Media: CF Card Type I/II, 512MB/1GB Microdrive™ Card  
**Number of frames with 32MB CF Card (approx.)**

Image size Image quality	FULL	3:2	UXGA	SXGA	XGA	VGA
HI	2	2	-	-	-	-
FINE	13	14	32	50	75	173
NORMAL	26	28	62	95	139	289
BASIC	51	55	118	173	243	459

**Aperture** 7-blade iris diaphragm; 10 steps in 1/3 EV increments  
**Exposure control** 1) Programmed Auto with Flexible Program [P], 2) Shutter-Priority Auto [S], 3) Aperture-Priority Auto [A], 4) Manual [M]; Exposure Compensation (±2 EV in 1/3 EV steps); Auto Exposure Bracketing (3 or 5 frames within ±2 EV)  
**Exposure metering** 4-mode TTL metering: 1) 256-segment Matrix [☒], 2) Center-Weighted [☐], 3) Spot [☑], 4) Spot AF Area [☒☑]  
**Exposure range** EV -2.0 ~ +18.0 (W), EV -0.5 ~ +17.0 (T) (ISO 100 equivalent)  
**Sensitivity (approx.)** ISO 100 equivalent: 100, 200, 400, 800, and Auto (can be controlled in any exposure mode)  
**White balance** 1) Matrix Auto White Balance with TTL control, 2) 5-mode Manual with fine tuning (Fine/Incandescent/Fluorescent/Cloudy/Speedlight), 3) Preset, 4) White Balance Bracketing  
**Self-timer** 10 sec. or 3 sec. duration  
**Built-in Speedlight** Guide number: 10 (when sensitivity is at ISO 100 equivalent) Flash control: Sensor flash system Flash modes: 1) Auto Flash, 2) Flash Cancel, 3) Anytime Flash, 4) Slow Sync, 5) Red-Eye Reduction  
**Accessory shoe** Standard ISO 518; lock pin provided prevents Nikon Speedlight from slipping off  
**External Speedlight** Hotshoe connects to external Nikon Speedlight SB-50DX/28DX/28/27/26/25/24/23/22s; built-in Speedlight can be canceled when using external Speedlight(s)  
**Playback menu options** 1) 1 frame, 2) Thumbnail (4/9 segments), 3) Slide show, 4) Movie with audio, 5) Enlarged playback (up to 6x); Shooting information: Histogram indication and highlight point display; Hide and protect attributes can be set to each image; Focus confirmation indication  
**Interface** USB 1.1  
**I/O terminal** Power input, Audio/Video output (NTSC or PAL selectable), Digital output terminal (USB 1.1/Remote Cord)  
**Power requirements** One Rechargeable Li-ion Battery EN-EL1 (included), One 6V 2CR5/DL245 lithium battery (optional), Six 1.5V LR6 (AA-size alkaline) batteries\* with Battery Pack MB-E5000 (optional), AC adapter (optional)  
**Battery life** \*1.5V Lithium, 1.2V NiMH, or 1.2V NiCd batteries can also be used. Approx. 100 min. when using LCD monitor and EN-EL1 battery at normal temperature (20°C [68°F])  
**Dimensions (W x H x D)** Approx. 101.5 x 81.5 x 67.5mm (4.0 x 3.2 x 2.7 in.)  
**Weight (without battery)** Approx. 360g (12.6 oz.)  
**Accessories included\*** Lens cap, Camera strap, AV cable, CompactFlash™ Card, USB cable UC-E1, Rechargeable Li-ion Battery EN-EL1, Battery Charger, Nikon View 4 CD-ROM  
**Optional accessories** Fisheye Converter FC-E8, Wideangle Converter WC-E68, Telephoto Converter TC-E2, Telephoto Converter TC-E3ED\*\*, Slide Copy Adapter ES-E28\*\*\*, Step Down Ring Lens Adapter UR-E5 and UR-E6, Lens Hood HN-E5000, LCD Hood HL-E5000, Battery Pack MB-E5000, Remote Cord MC-EU1  
\* Standard accessories may differ by country or area.  
\*\* Recommended for use with 1.2x digital zoom or higher (vignetting occurs otherwise)  
\*\*\*Recommended for use with 1.4x digital zoom or higher

Driver Software Nikon View 4 System Requirements

Macintosh		Windows	
<b>OS</b>	Mac® OS8.6 - 9.2	<b>OS/Models</b>	Windows® 98/98SE, Windows® 2000 Professional, Windows® Me pre-installed model
<b>Models</b>	iMac™, iBook™, Power Macintosh® G3 (Blue/White), Power Macintosh™ G4 or later, PowerBook® G3 (only built-in USB ports supported) or later	<b>CPU</b>	MMX® Pentium® or later
<b>RAM</b>	32Mbyte (64Mbyte or more recommended)	<b>RAM</b>	64Mbyte (128Mbyte or more recommended)
<b>Hard disk</b>	15MB required for installation, with additional amount equivalent to twice the capacity of the camera memory card required when Nikon View 4 is running	<b>Hard disk</b>	15MB required for installation, with additional amount equivalent to twice the capacity of the camera memory card required when Nikon View 4 is running
<b>Display</b>	640 x 480 with 16-bit color (800 x 600 or greater, full color recommended)	<b>Display</b>	640 x 480 with 16-bit color (800 x 600 or greater, full color recommended)
<b>Others</b>	CD-ROM drive, USB interface (only built-in USB ports supported), Mac® OS8.6 needs USB driver (ver. 1.3.5) on Apple's website	<b>Others</b>	CD-ROM drive, USB interface (only built-in USB ports supported)

• Windows® is either a registered trademark or trademark of Microsoft Corporation in the United States and/or other countries. • Macintosh® is either a registered trademark or trademark of Apple Computer Inc. in the United States and/or other countries. • CompactFlash™ is a trademark of SanDisk Corporation. • Products and brand names are trademarks or registered trademarks of their respective companies. • Images on LCDs and monitors shown in this brochure are simulated.

Specifications and equipment are subject to change without any notice or obligation on the part of the manufacturer. November 2001  
 ©2001 NIKON CORPORATION

**WARNING** TO ENSURE CORRECT USAGE, READ MANUALS CAREFULLY BEFORE USING YOUR EQUIPMENT. SOME DOCUMENTATION IS SUPPLIED ON CD-ROM ONLY.

COOLPIX 5000 supports EPSON's "PRINT Image Matching". "PRINT Image Matching" is a technology which assists in producing vivid photo-quality prints from PIM-enabled digital cameras. To obtain this benefit, a digital camera and printer that are compatible with "PRINT Image Matching" are required.





**NIKON CORPORATION**  
 FUJI BLDG., 2-3, MARUNOUCHI 3-CHOME, CHIYODA-KU, TOKYO 100-8331, JAPAN  
[www.nikon-image.com/eng/](http://www.nikon-image.com/eng/)

Printed in Japan Code No. 6CE41182 (0111-119.62)K

# Nikon

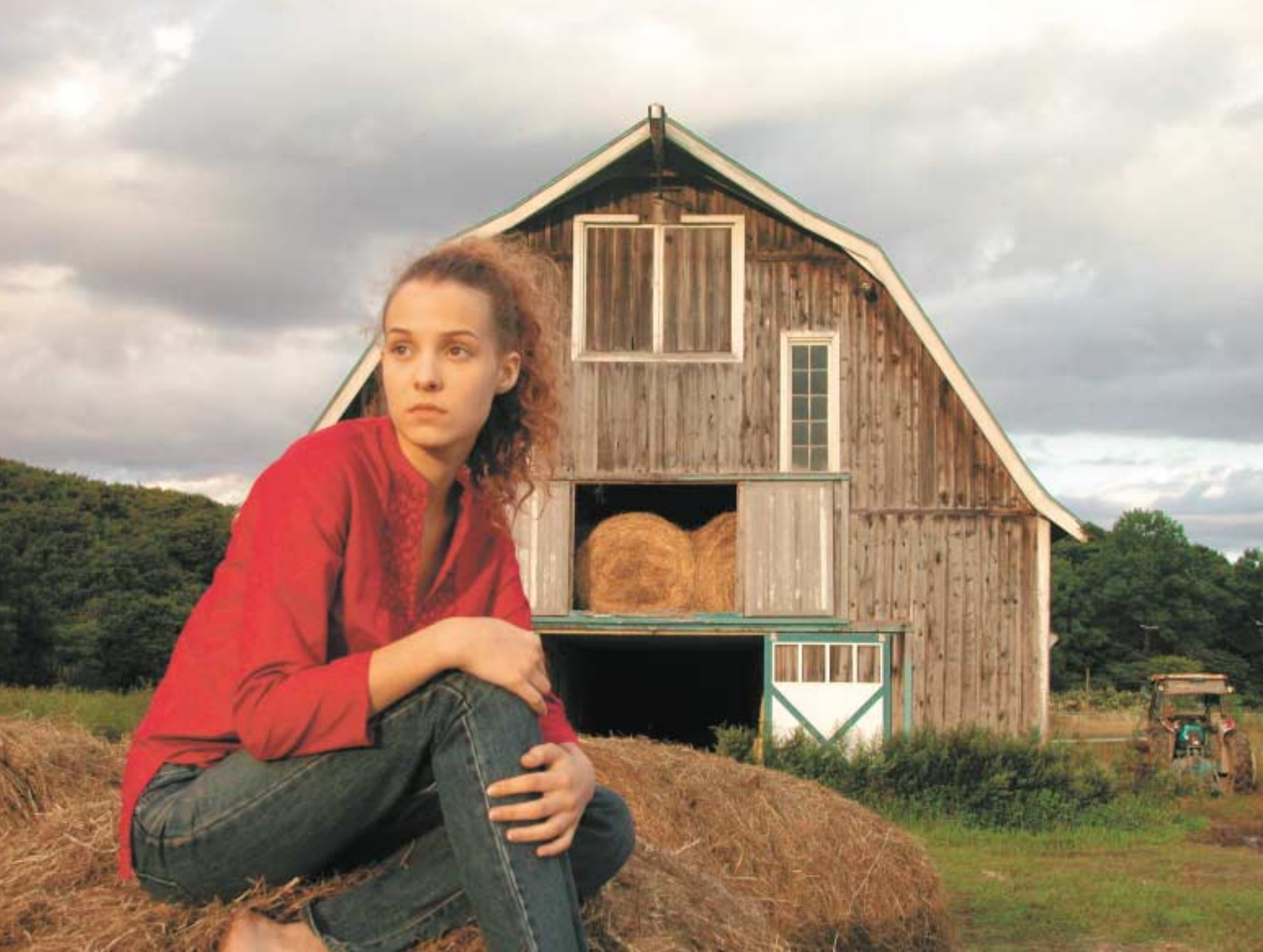


EXTRAORDINARY DIGITAL

# COOLPIX5000

<b>5.0</b> Effective Megapixels	Superhigh-precision <b>28-85mm</b> Zoom-Nikkor Lens (35mm [135] equiv.)	<b>1/4,000 sec.</b> Top Shutter Speed	<b>3 Frames Per Second</b> at Full Image Size	Durable <b>Magnesium</b> Alloy Body
------------------------------------	--	--	--	---





## COOLPIX5000

# R E F I N E D E X P R E S S I O N

It all began when Nikon's top camera designers got together with the aim of producing a unique digital camera for the photography enthusiast. The goal was to meet the demands of someone who understands photographic tradition, yet is passionate about the advantages of digital. The result of their vision, the new COOLPIX 5000, is here.

Take the camera in hand. Its compact, magnesium-alloy body and full-size grip feel secure, comfortable and designed for a lifetime of fine photography. At the heart of the COOLPIX 5000's durable body lies a large, 2/3-inch-type CCD. In front is a superhigh-precision 28-85mm\* Zoom-Nikkor lens. Together they offer an unsurpassed

5.0 effective megapixels. And integrated into the electronics is Nikon's unique image processing algorithm, for rich, detailed resolution and vibrant colors.

The result is a digital photography instrument of unprecedented design, combining quality, durability, rapid response and ease of use. The new Vari-angle LCD monitor, versatile exposure controls, convenient accessory shoe, and smart, ergonomic engineering give the COOLPIX 5000 creative potential surpassing that of any other consumer digital camera. It all adds up to expressive refinement that is simply extraordinary.

#### Shooting data

- Image size: 2,560 x 1,920
- Image quality mode: FINE
- Focal length: 12.4mm
- Exposure metering: Matrix
- Exposure mode: Aperture-Priority Auto
- Shutter speed: 1/196 sec.
- Aperture: f/4.8

- 5.0 effective megapixels
- 2/3-inch-type CCD
- Recording image size of 2,560 x 1,920-pixels (full size)
- Superhigh-precision 28-85mm\* Zoom-Nikkor lens incorporating three aspherical lens elements
- Nikon advanced image-processing algorithm
- Shutter speed range of 1/4,000\*\* to 8 sec.
- Durable, professional-grade magnesium (Mg) alloy body in a compact, ergonomic design
- Vari-angle LCD monitor for total shooting freedom
- AUTO mode for all automatic camera settings, plus three convenient CUSTOM modes
- Battery life of approx. 100 minutes with rechargeable Li-ion battery EN-EL1
- Full line of optional system accessories, including:
  - New 19mm\* Wideangle Converter
  - Battery Pack (for six 1.5V LR6 [AA-size alkaline] batteries\*\*\*) with second shutter release button for use when shooting in vertical format

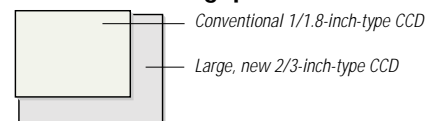
\* 35mm (135) format equivalent.

\*\* Available in Programmed Auto [P] and Aperture-Priority Auto [A] exposure modes.

\*\*\* 1.5V Lithium, 1.2V NiMH, or 1.2V NiCd batteries can also be used.



5.0 effective megapixels



The COOLPIX 5000 delivers an impressive 5.0 effective megapixels for truly superb image quality. The **large, 2/3-inch-type CCD** provides a wider dynamic range to capture shadows and highlight details more faithfully, and ensures a smoother reproduction of the complete tonal range. The **maximum recording image size of 2,560 x 1,920 pixels** ensures incredibly sharp pictures, enabling reproduction of fine details on images up to A3 size (297 x 420mm) or 11 x 14 in.

Precision 28-85mm Zoom-Nikkor lens

Nikon lens designers spared no effort in creating the advanced optics that bring the COOLPIX 5000's 5.0 effective megapixels to life. The **3x Zoom-Nikkor lens** offers a **28-85mm zoom range (35mm [135] equiv.)** that covers everything enthusiastic photographers find most exciting in photography. With the Nikon COOLPIX system of **accessory converters**, this range can be extended, and for even greater magnification, there's an auxiliary **4x digital zoom**. The lens, which consists of nine elements in seven groups, features **three glass-molded aspherical lens elements**, including a large-diameter element up front. Lens elements have been treated with **Nikon's Super Integrated Coating (SIC)** to deliver super-sharp, clear images. Distortion, chromatic aberration and color blur have all been reduced to negligible levels. Indeed, you'll be amazed at how fine details — such as hair and skin texture — can be reproduced, even in larger format printing.



Minimum distortion at 28mm (35mm [135] equiv.)



Outstanding details, clarity and colors

**Macro mode** lets you get as close as 2cm (0.8 in.) to your subject. When control is paramount, a **50-step Manual focus with convenient LCD monitor focus confirmation indication** enables precise determination of the focus point.

Five-Area Multi Autofocus

The COOLPIX 5000's **Five-Area Multi Autofocus with 7,514 steps** provides unprecedented focusing precision. And for easy, flexible composition, the **thumb-operable Multi Selector** allows you to target any of five focus areas in the frame.



Five-Area Multi Autofocus

Intelligent metering system

Nikon's exclusive **256-segment Matrix Metering** [M] delivers optimal exposures in even the most difficult lighting conditions, while **Center-Weighted** [C] and **Spot Metering** [S] enhance your versatility. In **Spot AF Area mode**, the metering automatically targets your selected focus area as the area of optimal exposure.



28mm (35mm [135] equiv.)



50mm



85mm



4x Digital Zoom (approx. 340mm)

Nikon's advanced image-processing algorithm

When you view the images you've captured — on your computer screen or as a print — you will immediately appreciate the **Nikon difference**. The **superior color reproduction** and **white balance** are the outcome of Nikon's unceasing research and analysis of images and image quality. The end result is a camera that captures not only the widest range of tones but also nature's finest gradations, a camera that responds equally well to both high saturation and delicate subtlety. Photographers know they can trust Nikon; now, the COOLPIX 5000 extends the boundaries.

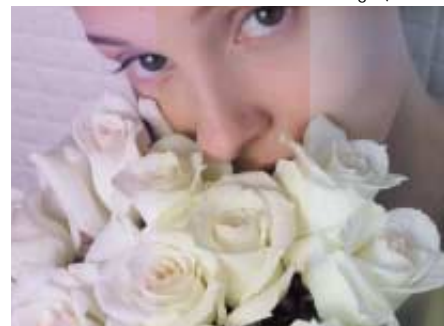
TTL White Balance

**Matrix Auto White Balance** precisely and automatically measures the white balance in a scene, making adjustments for the many and varied ambient lighting conditions you'll encounter.

For greater creative control, **five Manual settings** (Fine/Incandescent/Fluorescent/Cloudy/Speedlight) allow you to select the optimum conditions for your vision and needs. Yet another convenience, **Preset mode** measures, analyzes and memorizes white balance values from any available neutral reference.

White Balance Bracketing

For more difficult conditions, such as settings with mixed light sources, the COOLPIX 5000 offers **White Balance Bracketing**. This feature automatically captures the same scene with three different white balance settings (reddish, neutral, and bluish) — all with a single release of the shutter — allowing you to make creative choices later in your digital darkroom.

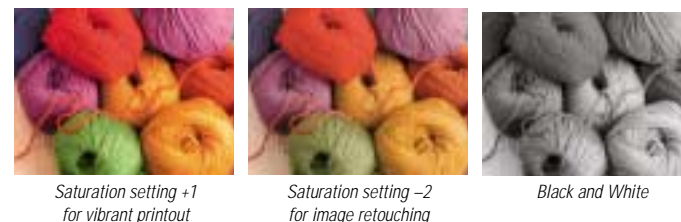
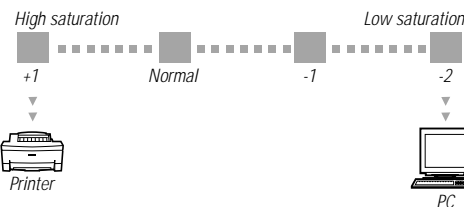


White Balance Bracketing

Slightly reddish Neutral Slightly bluish

Saturation Control

**Four steps of color saturation adjustment** allow you to select from a vibrant, highly saturated image suitable for home printouts or a more subtle image with a wider tonal range that provides better response to retouching on your computer. It also includes a **Black and White mode** that renders beautiful gray tone images.



Saturation setting +1 for vibrant printout

Saturation setting -2 for image retouching

Black and White

Quality images — however you want to use them



Noise Reduction Mode ON

Noise Reduction Mode OFF

Noise Reduction Mode

This feature takes you beyond the limits of conventional digital photography, employing a multiple exposure technique to eliminate intrusive background noise buildup from the CCD, and deliver extended time exposures with excellent results.

Clear Image Mode\*

Available for recording image sizes of 1,280 x 960 pixels (SXGA size) or smaller, **Clear Image Mode** takes full advantage of the camera's 5.0 effective megapixels — adding and averaging two pixels vertically — to give you a **wider dynamic range** and **superior S/N ratio**.



Clear Image Mode (1,280 x 960 pixels)

Using a multiple exposure technique that incorporates noise reduction and electronic processing, it produces an outstanding image with minimum noise and beautiful color gradations.

\* This feature is not recommended for moving subjects. Camera shake or subject movement may result in a blurry image. Use of a tripod is advised.

Best Shot Selector

The **Best Shot Selector (BSS)** automatically selects the "sharpest" image from a series of consecutive shots of a subject, giving you a measure of safety that proves particularly valuable when taking macro and telephoto pictures. This feature can be used even with uncompressed [H] image data.



Macro with BSS





With Fisheye Converter FC-E8



With Wideangle Converter WC-E68

**Design that fires the creative spirit**



Magnesium alloy body

Take hold of the COOLPIX 5000, and experience the measure of Nikon's vast heritage. Using a **tough but lightweight magnesium (Mg) alloy**, the camera's contours have been sculpted for a **secure, comfortable grip**. Nikon designers have paid meticulous attention to every detail — from

delicate curves to finely textured finish — for **optimum shooting comfort**. The dial and buttons on the camera have been ergonomically arranged for instant, intuitive control.

The all-new **Vari-angle LCD monitor** gives you unprecedented freedom in choosing when and where to shoot — or, if you prefer, simply close the monitor and use the **bright optical zoom viewfinder**.



**Creative possibilities**

dramatically improved. When shooting continuously, the COOLPIX 5000 lets you take three consecutive full-size (2,560 x 1,920-pixel) pictures at **3 frames per second in Continuous High** mode, or 10 shots at 1.5 fps in **Continuous Low** mode. **Multi-Shot 16** takes 16 VGA-size (640 x 480-pixel) pictures consecutively at 3 fps, and records them as a single full-size image. If speed is essential, turn on **Ultra High-speed Continuous** mode and take up to 100 QVGA-size (320 x 240-pixels) frames at 30 fps. Getting the pictures into your computer is fast too — simply connect via the **USB 1.1 interface** (Mass Storage Class) and the camera shows up on your computer screen as another hard disk.

**Impressive speed**

**Rapid response** has been engineered into the heart of the COOLPIX 5000 so you're always ready for that decisive moment. Shutter release time lag and all other functions — from start-up to zoom, autofocus to image processing — have been



- Capture mode: Continuous High
- Exposure mode: Shutter-Priority Auto [S]
- Shutter speed: 1/2,000 sec.

**Speedlight system**



The built-in Speedlight offers impressive versatility — and when you require even more light, simply attach an external Nikon Speedlight, such as the SB-50DX or SB-28DX, to the built-in accessory shoe. Fitting the external Speedlight automatically cancels the built-in Speedlight's firing — but you can also choose to fire both simultaneously.

**Other features**

- Movies with audio (up to 60 sec.); autofocus and auto exposure; for recording and playback
- Sensitivity settings (ISO equivalent 100, 200, 400, 800, and AUTO)
- Dedicated Function [FUNC] button for easier operation
- AE-Lock/AF-Lock button
- Various playback modes, including histogram indication, focus confirmation indication and highlight point display

**Versatile Exposure Controls with 1/4,000 sec. top shutter speed**

Choose from four exposure modes — **Programmed Auto [P]** with Flexible Program, **Shutter-Priority Auto [S]**, **Aperture-Priority Auto [A]** and **Manual [M]** — for every possible combination of creative control. When the situation demands, [P] and [A] modes give you a **top shutter speed of 1/4,000 sec.** And even with the maximum aperture selected, the shutter operates at **up to 1/2,000 sec. in any exposure mode**. A **seven-blade precision-rounded iris diaphragm** allows you to control aperture values with exceptional accuracy. **Exposure Compensation** allows you to shift the exposure value (EV) manually from -2 to +2 in 1/3 EV steps. **Auto Exposure Bracketing** does it for you, automatically.



Quick Review

**Quick Review**

One press of the **Quick Review button** lets you check any previously captured images in quarter-screen while still in record mode. Another press fills the screen with the image full frame, yet at any moment, pressing the shutter button once reactivates record mode.

- Comes with Li-ion Rechargeable Battery EN-EL1 and charger; provides approx. 100 minutes of battery life with full charge
- Auto file numbering
- Design rule for Camera File system (DCF), and Digital Print Order Format (DPOF)

**System Accessories**

The COOLPIX 5000 provides seamless compatibility with numerous system accessories: the new **19mm (35mm [135] equiv.) Wideangle Converter WC-E68** gives your photography a dramatic perspective; an optional **Battery Pack MB-E5000** that uses six 1.5V LR6 (AA-size alkaline) batteries enables easier vertical shooting; and **Nikon Speedlights** and **Remote Cord MC-EU1** provide enhanced creativity. Lens hoods and an LCD hood are also available.

In addition to Nikon's EC-CF series, the COOLPIX 5000 may be used with the following CompactFlash™ Cards: SanDisk Corporation's SDC-FB16/32/48/64/96/128 and Lexar Media Corporation's CF008/016/032/048/064/080 4X USB, CF008/016/032/048/064/080 8X USB and CF128/160 10X USB. IBM Corporation's 2DSCM-10512 (512MB) and DSCM-11000 (1GB) Microdrive™ Cards are also supported. For more details, please contact the respective company.

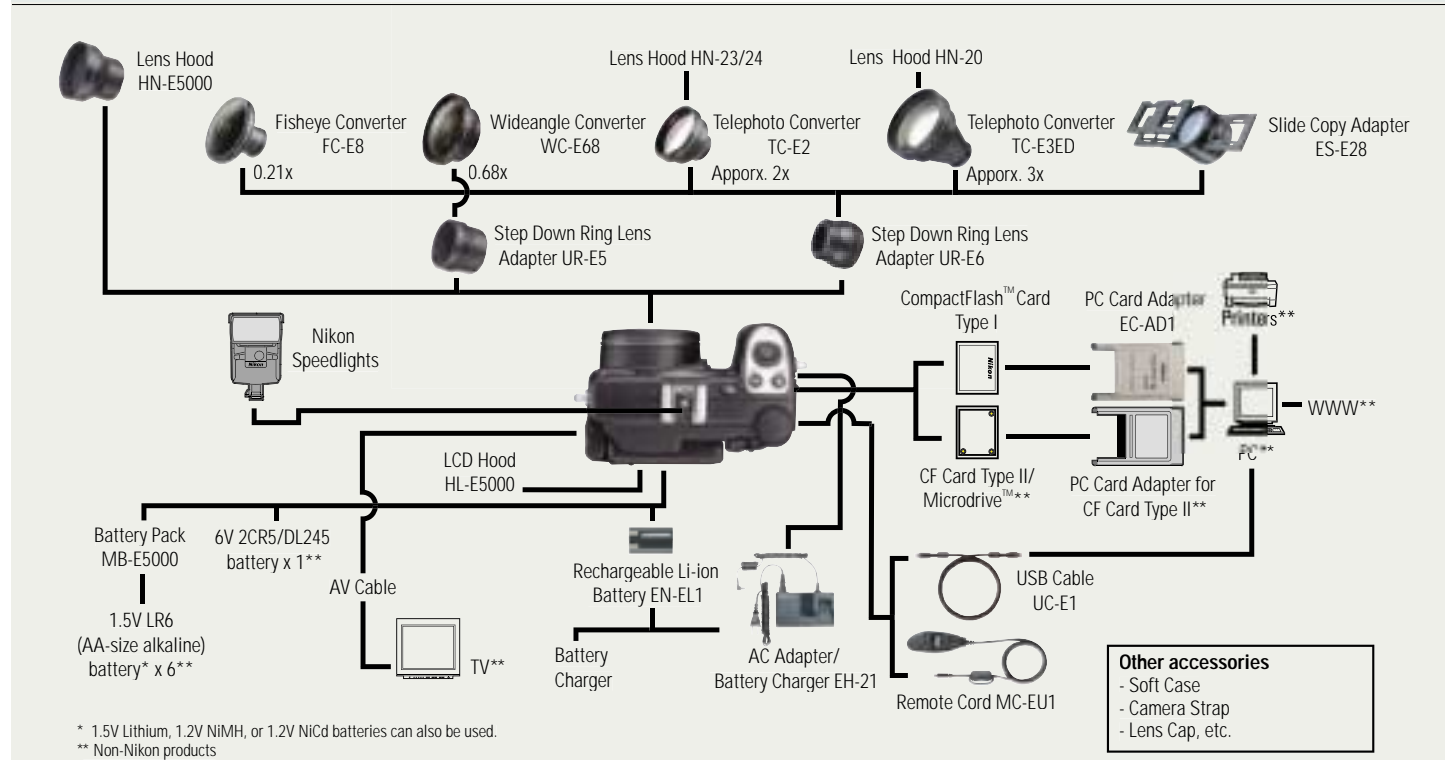
**Unmatched versatility**

**Nikon View 4**

Dedicated driver software, **Nikon View 4** (for Windows & Macintosh) launches automatically when the camera is connected to a PC with the USB 1.1 cable. It is able to recognize and transfer images stored in the CompactFlash™ Card, and is also launched when a CompactFlash™ Card with stored images is inserted into a CF Card reader.



**S y s t e m c h a r t**



\* 1.5V Lithium, 1.2V NiMH, or 1.2V NiCd batteries can also be used.  
\*\* Non-Nikon products

**N o m e n c l a t u r e**

