

BALL HEADS

Our new centre ball series is hot out of the hands of the design team. Favoured by those who give priority to speed over millimetric precision when setting up the perfect shot, the range offers considerable weight-saving features and low-profile design. Made completely of aluminium, the Manfrotto centre ball head range offers each type of user a similar basis to build upon. Movements across models have been brought closer together, while positioning angles cover 360° rotation around the vertical axis to +90° / -90° lateral tilt. The ratchet lever ball lock system is secure and fast, with speed in use further guaranteed by the quick release plate optional on many of the models in the series in addition to the standard 1/4" or 3/8" fixed screw.



On models **482, 484, 486, 488, 490, 468**: fixed screw.



On model **488RCO**: hexagonal quick release plate



On models **484RC2, 486RC2, 488RC2, 468RC2**: rectangular quick release plate.



On models **484RC4, 490RC4, 468RC4**: large rectangular quick release plate.



Ball Heads



MICRO BALL HEAD 482



All-purpose ball head designed for use with compact, 35mm and small digital cameras. This head is ideal for the Table Top Tripod 209, car window clamp 243 and monopods such as the 276. It has a single indexed "ratchet" locking knob for 360° pan and +90° -90° tilt movements. Camera attachment is via a 50mm platform with 1/4" male thread. Head to tripod attachment is 1/4" and 3/8" female. All aluminium construction and black finish.

MINI BALL HEAD 484



Designed for use with compact, 35mm and small digital cameras. The strong die-cast construction, precision-machined aluminium housing and extremely hard phenolic resin ball provide excellent smooth movements across all tilt positions. A single "ratchet" control lever securely locks both the +90°-90° ball and the 360° pan movements. Camera attachment is via a 50mm platform with 1/4" male thread. Head to tripod attachment is 3/8" female.

MINI BALL HEAD WITH RC2 RAPID CONNECT SYSTEM 484RC2



This versatile head is fitted with a quick release 200PL camera plate system with a secondary safety catch. The head is perfect for 35mm SLR cameras with medium lenses, and light medium format cameras. Head to tripod attachment is 3/8" female.
Optional Plates: 200PL-38, 200PLARCH-14, 200PLARCH-38

COMPACT BALL HEAD 486



The Compact Ball Head is strong enough to take 35mm SLR cameras with medium lenses, and light medium format cameras. It has a single indexed "ratchet" locking knob for 360° pan and +90° -90° tilt movements. Camera attachment is via a 50mm platform with 1/4" male thread. Head to tripod attachment is 3/8" female. All aluminium construction and black finish.

COMPACT BALL HEAD WITH RC2 RAPID CONNECT SYSTEM 486RC2



Same as the 486 but equipped with a quick release 200PL camera plate system with a secondary safety catch. Camera plate has 1/4" male thread. Head to tripod attachment is 3/8" female.
Optional Plates: 200PL-38, 200PLARCH-14, 200PLARCH-38

MIDI BALL HEAD 488



With its solid aluminium construction and phenolic resin ball, this head is the ideal support for all traditional or digital small or medium format cameras. It features separate fast action "ratchet" locks on 360° pan and +90° -90° tilt movements. You can position your camera anywhere in 180° sphere with confidence and ease. Camera attachment is via a 50mm platform with 1/4" male thread. Head to tripod attachment is 3/8" female.

MIDI BALL HEAD WITH RCO RAPID CONNECT SYSTEM 488RC0



Same as the 488 but equipped with a quick release 030 camera plate system with a secondary safety catch and two spirit levels for precise levelling on both vertical or horizontal axes. Camera attachment has 1/4" male thread. Head to tripod attachment is 3/8" female.
Optional Plates: 030ARCH-14, 030ARCH-38, 030HAS, 130-14, 130-38, 030L, 030UNIV.



MIDI BALL HEAD WITH RC2 RAPID CONNECT SYSTEM 488RC2

10.8cm	0.67kg	8kg	200PL-14	Pan 360°	Tilt +90°-90°

Same as the 488 but equipped with a quick release 200PL camera plate system with a secondary safety catch. Camera plate has 1/4" male thread. Head to tripod attachment is 3/8" female.

Optional Plates: 200PL-38, 200PLARCH-14, 200PLARCH-38

MAXI BALL HEAD WITH RC4 RAPID CONNECT SYSTEM 490RC4

13.7cm	1.12kg	12kg	410PL	Pan 360°	Tilt +90°-90°

Same as the 490 but equipped with a quick release 410PL camera plate system with a secondary safety catch and two spirit levels for precise levelling on both vertical or horizontal axes. Camera plate has 1/4" male thread. Head to tripod attachment is 3/8" female.

MIDI BALL HEAD WITH RC4 RAPID CONNECT SYSTEM 488RC4

11.5cm	0.8kg	8kg	410PL	Pan 360°	Tilt +90°-90°

Same as the 488 but equipped with a quick release 410PL camera plate system with a secondary safety catch and two spirit levels for precise levelling on both vertical or horizontal axes. Camera plate has 1/4" male thread. Head to tripod attachment is 3/8" female.

GRIP ACTION BALL HEAD BLACK 222 GRIP ACTION BALL HEAD GREEN 222NAT

21cm	0.78kg	2.5kg	200PL-14	Pan 360°	Tilt +90°-90°

Versatile, quick and easy to use. Just grip the handle and you can position your camera anywhere within a 180° sphere. Supplied with quick release camera plate with secondary safety lock, built-in bubble level and tension adjustment. Made of cast aluminium. Ideal for 35mm cameras with short or medium focal length lenses.

Available in two versions: the 222 is black painted while the 222NAT green painted.

Camera attachment: 1/4"

Optional Plates: 200PL-38, 200PLARCH-14, 200PLARCH-38
PATENTED

MAXI BALL HEAD 490

14cm	1.05kg	12kg	Pan 360°	Tilt +90°-90°

The top of Manfrotto's range of centre ball heads in die-cast aluminium with precision phenol resin ball. The 490's features make it versatile and ideal for digital and traditional photographic equipment from 35mm to 20x25cm format up to 12kg in weight. It features separate locks on 360° pan and +90° -90° tilt movements, with an additional friction control on the ball movement to give just the right resistance and smoothness with minimum effort, even with varying weight of equipment on board.

The Maxi Ball Head attaches to the camera via a 50mm platform with an ingeniously combined 1/4" and 3/8" male thread. Head to tripod attachment is 3/8" female.

HYDROSTAT BALL HEADS

The Hydrostat is the most advanced ball head of the entire Manfrotto range. Designed to meet the demand of professional photographers for a lightweight, but at the same time heavy duty load capacity ball head. This model has similar features to our standard range of ball and socket heads, like independent pan and tilt locks, 360° pan and +90° / -90° tilt movement - but employs a revolutionary friction and locking mechanism.

Designed for camera and lens loads of up to 16kilos, this head has a magnesium die cast body, a 2" Teflon coated aluminium ball which combined with specially designed tension surfaces provides movement as smooth as silk. A calibrated adjustable tension control allows you to preset the ball tension to suit your camera weight and give you fingertip control. The oversized lock knob hides a "PAT PENDING" locking mechanism which uses the fundamental criteria of the hydraulic laws - specifically referring to the hydrostatic ones, which locks the camera in such a secure position it gives the impression it has become one solid part of the head and removing completely any movement during the locking phase. Completing this masterpiece, a graduated panoramic base and a choice of six different "Hydrostat Ball Head" versions featuring a variety of quick release plate fixings.



Ball Heads

Manfrotto's range of quick release plates is as broad as the range of photographic shooting equipment available in the world. One of the principle criteria used in manufacturing a quick release camera plate is its capability to hold the weight of the camera in all head positions. That is why, for example, the 200PL (RC2) connect plate system is mainly used to hold SLR systems, while the 410PL (RC4) is used with medium format cameras, and the sliding quick release system, 357PL/501PL (RC3/RC5), is used with cameras with heavy and bulky tele lenses. In order to give all professionals the possibility to work with this innovative ball head, we have prepared a version for every quick release camera plate Manfrotto manufactures plus a fixed version for those who prefer this type of attachment. Enjoy the choices!



HYDROSTATIC BALL HEAD 468MG

 13cm
  0.65kg
  16kg
  Pan 360°
  Tilt +90°-90°



HYDROSTATIC BALL HEAD WITH RC0 RAPID CONNECT SYSTEM 468MGR0

 13.5cm
  0.84kg
  16kg
  030-14
  Pan 360°
  Tilt +90°-90°



HYDROSTATIC BALL HEAD WITH RC2 RAPID CONNECT SYSTEM 468MGR2

 12cm
  0.65kg
  10kg
  200PL-14
  Pan 360°
  Tilt +90°-90°



HYDROSTATIC BALL HEAD WITH RC3 RAPID CONNECT SYSTEM 468MGR3

 12cm
  0.80kg
  16kg
  375PLV
  Pan 360°
  Tilt +90°-90°



HYDROSTATIC BALL HEAD WITH RC4 RAPID CONNECT SYSTEM 468MGR4

 12cm
  0.73kg
  16kg
  410PL
  Pan 360°
  Tilt +90°-90°



HYDROSTATIC BALL HEAD WITH RC5 RAPID CONNECT SYSTEM 468MGR5

 12cm
  0.74kg
  12kg
  501PL
  Pan 360°
  Tilt +90°-90°

Ball Heads



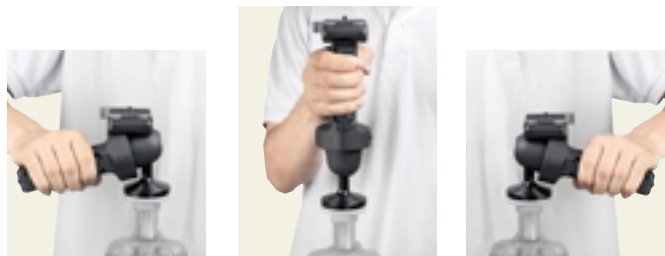
HORIZONTAL GRIP ACTION BALL HEAD 322RC2

10.3cm	0.7kg	5kg	200PL-14	Pan 360°	Tilt -90°+90°	Tilt -3°+90°

Take the versatility of a ball head, add true ergonomic control and you get the 322RC2: a photographic head that allows you to unblock, move, position and lock your camera with one hand in one position thanks to the revolutionary design of its grip handle, which incorporates the ball lock lever and can also mount the 322RS shutter release accessory. A friction control wheel lets you regulate the power of the blocking mechanism to match the weight of your camera/lens. The 322RC2 is made from magnesium for lightweight performance, and is designed to keep the weight of your kit as close as possible to the tripod's centre of gravity by way of its reduced height. It is this fact, matched with the precision construction of the 322RC2 that gives the head its load capacity of 5kg. Complete with built-in bubble spirit level and quick release camera plate (standard 1/4" screw, with secondary safety pin). Suitable for use with 35mm or medium format cameras.

Optional Plates: 200PL-38, 200PLARCH-14, 200PLARCH-38

PAT. PENDING



ERGONOMICS

Whether you're left handed or right, whether you prefer a horizontal grip or vertical, the 322RC2 is practical and ergonomic. Customise the location of the camera plate to suit your ideal working position.



CENTRE OF GRAVITY

In turn, aligning the camera close to the tripod centre of gravity gives the **322RC2** an extraordinary 5kg load capacity.

Lateral tilt movement: -3° / +90°.



322RS fitted for left-handed use of the 322RC2 head in horizontal position.



322RS fitted for left-handed use of the 322RC2 head in vertical position.



322RS fitted for right-handed use of the 322RC2 head in vertical position.



322RS fitted for right-handed use of the 322RC2 head in horizontal position.



BACK VIEW
Double action switch
2.5mm stereo jack

ELECTRONIC SHUTTER RELEASE KIT FOR 322RS

The remote control electronic shutter release kit fits the 322RC2 grip action ball head and puts control of your camera's shutter down on the head itself, so you can take photos the moment you're in position, without having to move your hand from the head grip up to the camera body. The 322RS can be fitted to the head no matter which position you choose to use it in, for both right and left handed photographers.

PAT. PENDING



CABLE SHUTTER RELEASE KIT 322RSM

The cable shutter release kit fits the 322RC2 Grip Action Ball Head and puts control of your camera's shutter down on the head itself, so you can take photos the moment you're in position, without having to move your hand from the head grip up to the camera body. The 322RS can be fitted to the head no matter which position you choose to use it in, for both right and left handed photographers.



ADDITIONAL CAMERA PLATE ADAPTER FOR 322RC - 322RA

Camera plate attachment assembly for the 322RC2 can also be available as a separate accessory in case you want the camera to be as close as possible to the tripod's center of gravity, which provides a higher rate of stability.

Code		Description
U5463		Bronica SQAI
U5453		Bronica SQAM, ETR md
U5453		Canon
U5FW41		Canon Elan 2, 2E, 7, 7E Rebel 200, XI Lite
522SCA		Canon EOS 300D, DIGITAL REBEL
U5FW46		Canon EOS 1, A2, A2E, AS, 1N, 620, T90
U5FW43		Canon EOS 1V, 3, D2000, D30
U5466		Canon EOS 1V, 3, D30, D60, 10D, 1D, 1D Mark II, 1Ds
U5459		Canon EOS A5, A2E, A2, 1, 1N, 620, T90
U5FW41		Contax 645, A1, N1
U5465		Hasselblad 503CW/CXi
U5452		Hasselblad ELM, ELX
U5456		Leica
U5467		Mamiya 645AF
U5FW45		Mamiya 645AF
U5454		Mamiya RZ67, RZ67 II, 645 Super, 645 Pro
U5458		Minolta 5000/I, 7000/I, 8000/I, 9000/I, 5Xi, 7Xi, 9Xi, 700si
U5FW42		Minolta 7 & 9
U5FW44		Nikon D1, D1x, N90/s, F5, F90x, F100
U5451		Nikon MD2/4/12/15, 8008/s, F4S
U5453		Olympus
U522SCA		Pentax *ist
U5FW47		Pentax 645N & all Pentax Autofocus SLR cameras except Z-1P